
February 2019

Hersham community site survey

Summary of results



Elmbridge
Borough Council

... bridging the communities ...



Hersham community site survey

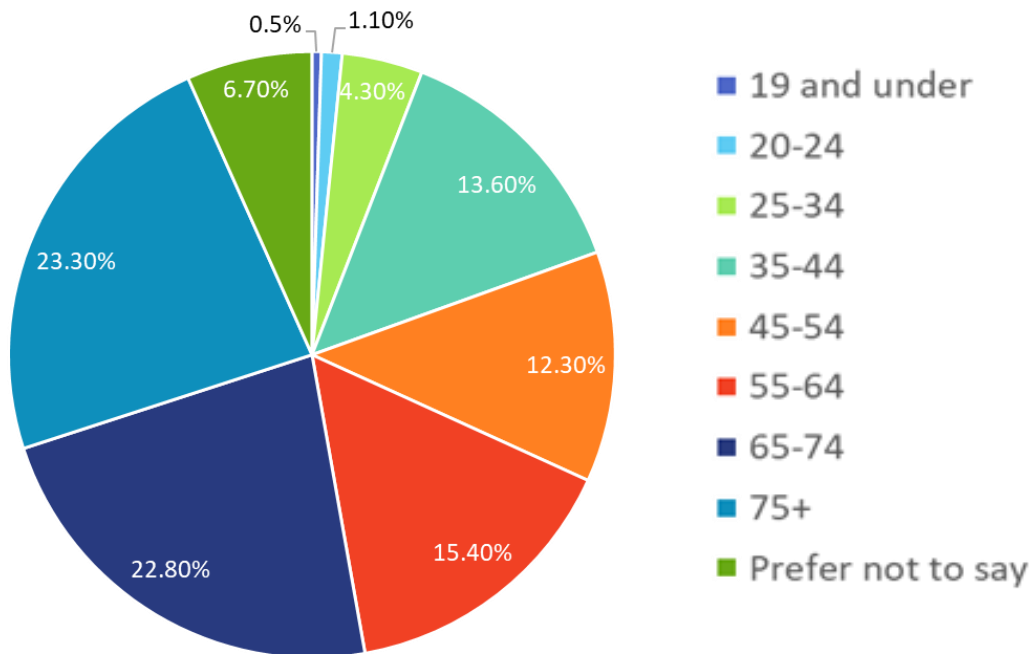
Overview

- Survey took place between 4 – 28 January
 - Survey was posted to over 6,000 residents and available in hard copy at the Centre for the Community and Hersham Library.
 - Mixture of paper and online completion
 - Short questionnaire with 3 open ended questions
 - Supporting communications to promote completion by residents
 - Drop-in at various locations to support / clarify
 - Response rate was outstanding with 1,131 surveys completed
-

Hersham community site survey

Age of respondents

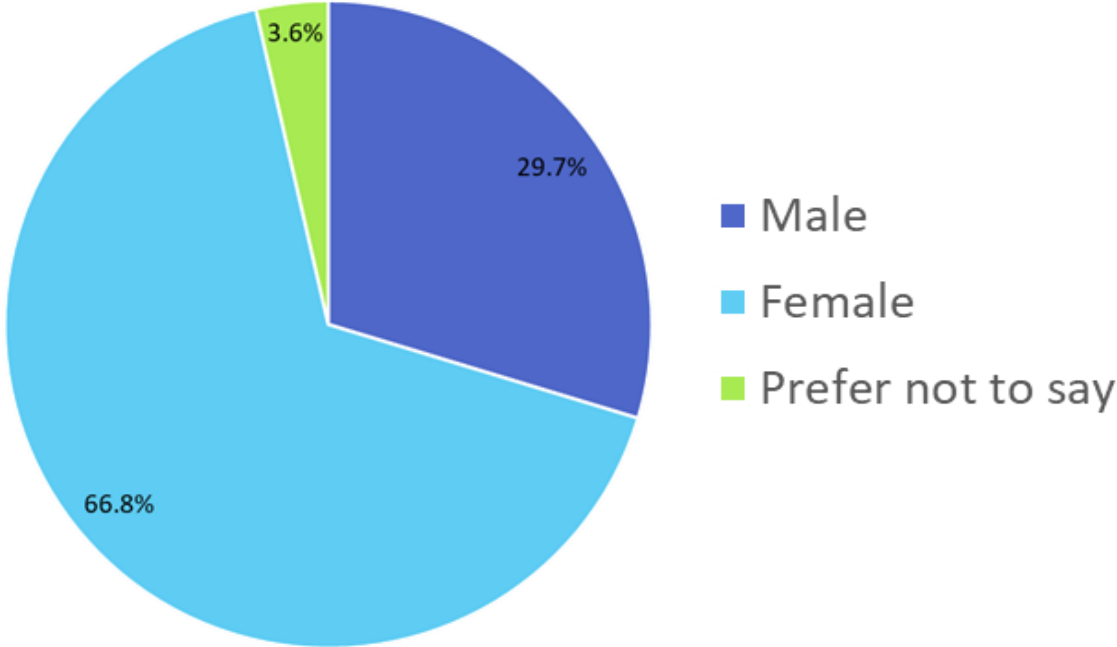
Nearly half the respondents were over 65 with limited response from those under 35 years of age (6%)



Hersham community site survey

Gender of respondents

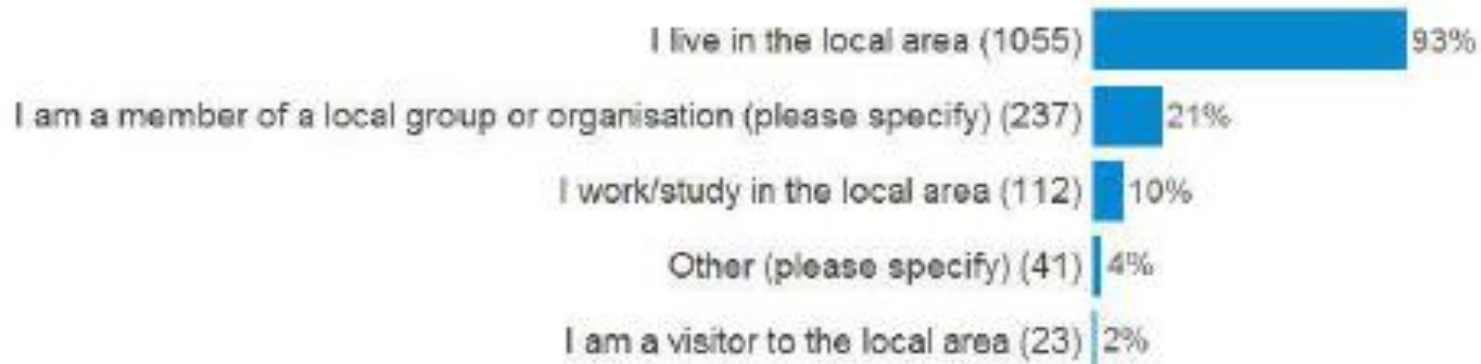
Over twice as many females completed the survey



Hersham community site survey

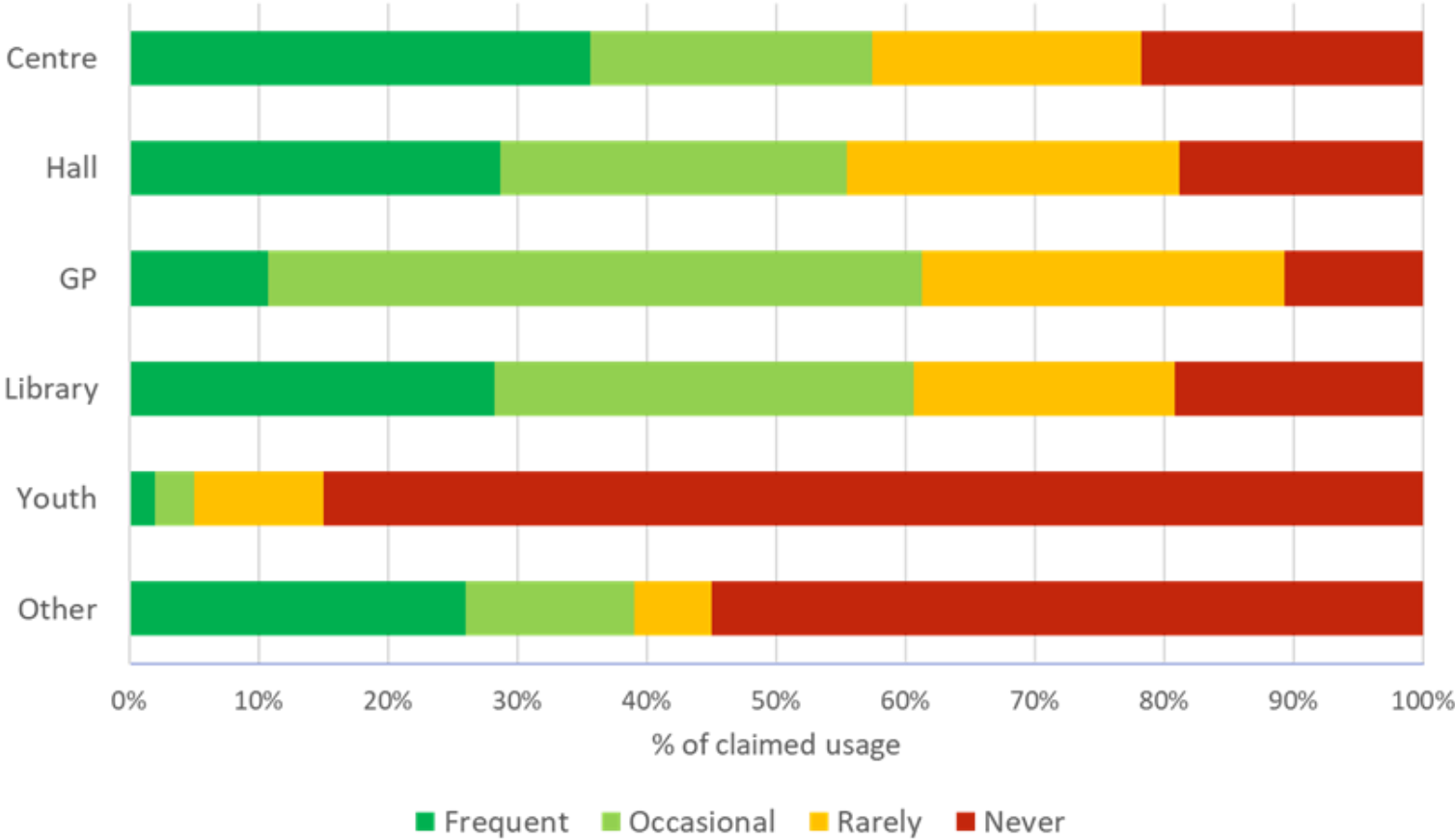
Capacity of respondents

In what capacity are you answering this survey? Please tick all that apply



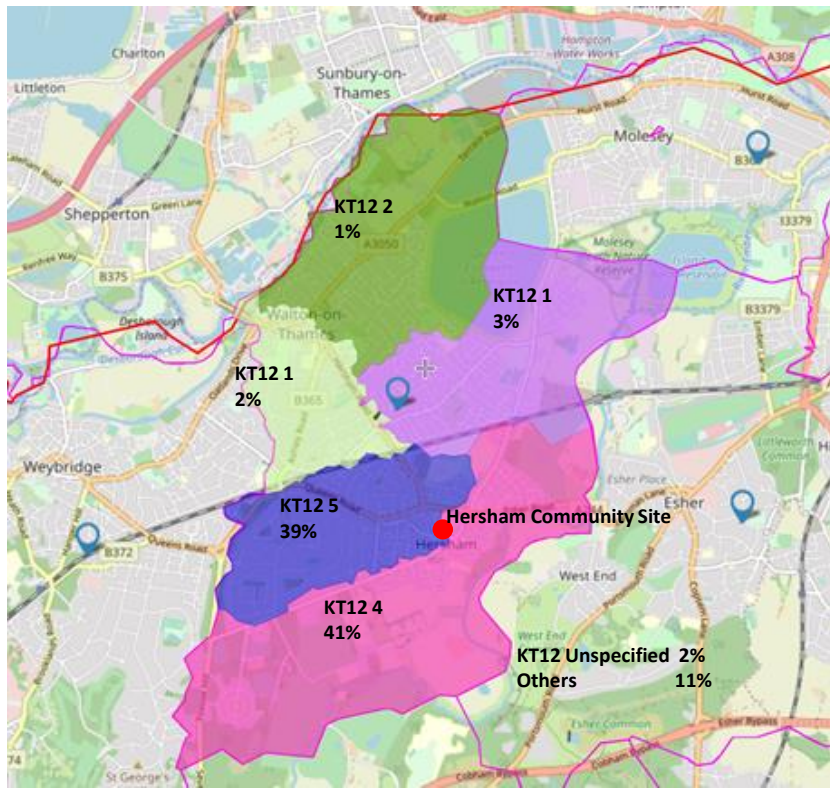
Hersham community site survey

Frequency of usage of local amenities



Hersham community site survey

Postcodes of respondents



- 80% of respondents live south of the railway line
 - 49% of users arrive by car and 47% walk to the site
 - 11% of respondents consider themselves to be disabled with 83% not being disabled
 - Over 90% of respondents live in Hersham
-

Hersham community site survey

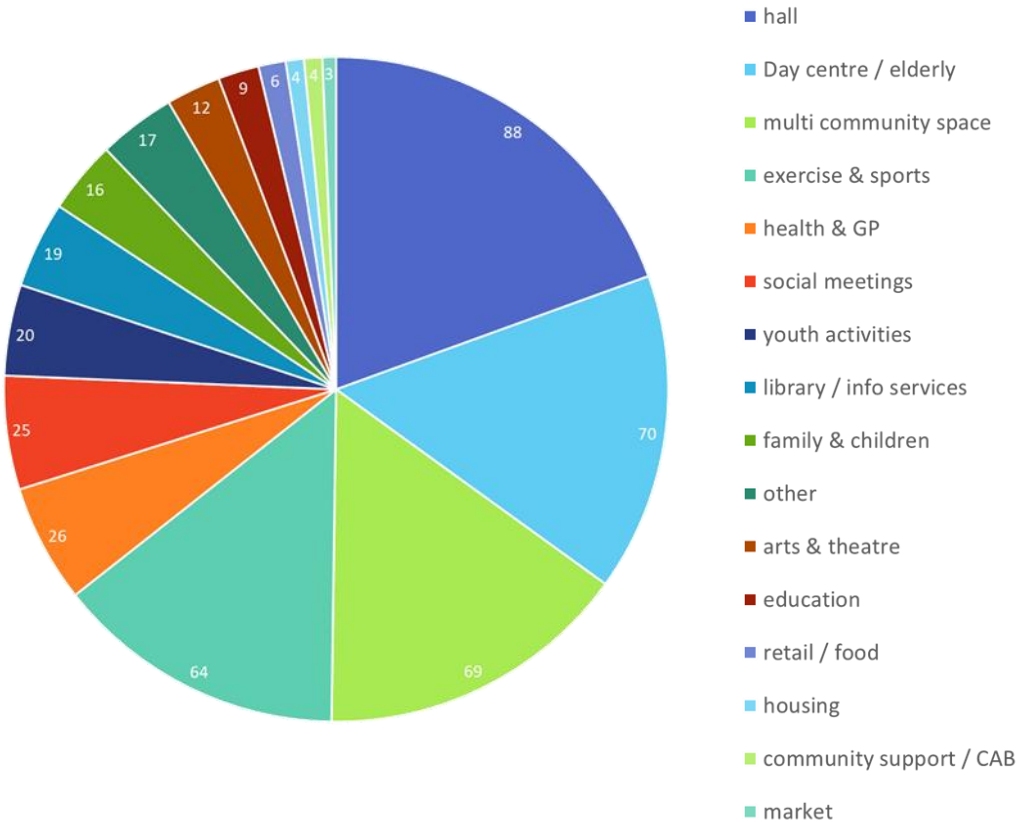
Facilities requested - overview

- The most requested type of facility was for a community centre plus multifunctional space for different community activities, with lower mentions of doctors surgery or housing.
 - Respondents wanted a range of community activities with the key ones being classes, sports and exercise, events and meetings (social & groups). There is a consistent mention of the market but to a lower level.
 - As the centre for the community, the facilities should be used more widely, not just for the elderly, offering a range of services including classes, health and leisure.
 - The community space should be multi-functional to meet the range of needs and consider including new areas such as business work place and computer facilities.
 - There are some views that there is enough housing provision already and should not be included, whilst others are supportive of affordable / social housing, especially flats above the site.
-

Hersham community site survey

Facilities requested - stats

Highest priority facilities requested

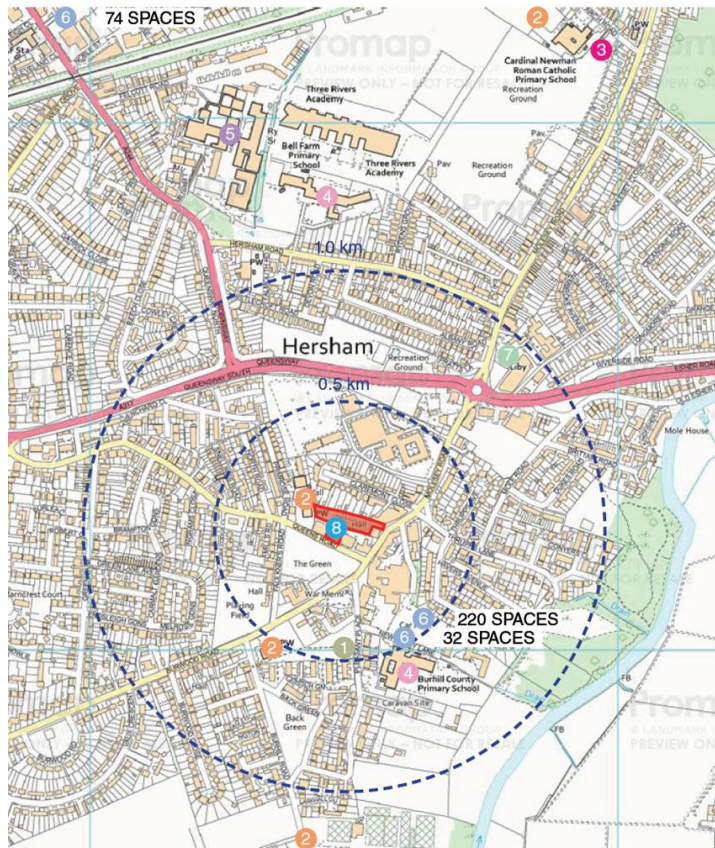


When asked to prioritise their needs, respondents ranked them as follows:

- **community hall;**
- **day centre;**
- **multi community space for exercise & sports;**
- **health facilities;**
- **social meetings;**
- **youth activities.**

Hersham community site survey

Other local community provision



Key

- 1 Surgery
- 2 Church Hall
- 3 Youth Centre
- 4 Primary school
- 5 Secondary school
- 6 Car Park
- 7 Library
- 8 Day Care centre

1.2 km from Walton-on-Thames train station

1.6 km from Hersham train station